

PART OF S.E. 1/4 OF SEC. 22 & S.W. 1/4 OF SEC. 23 T.5N., R.1W., S.L.B. & M.  
EAST HIGHLAND ESTATES SUBDIVISION

142

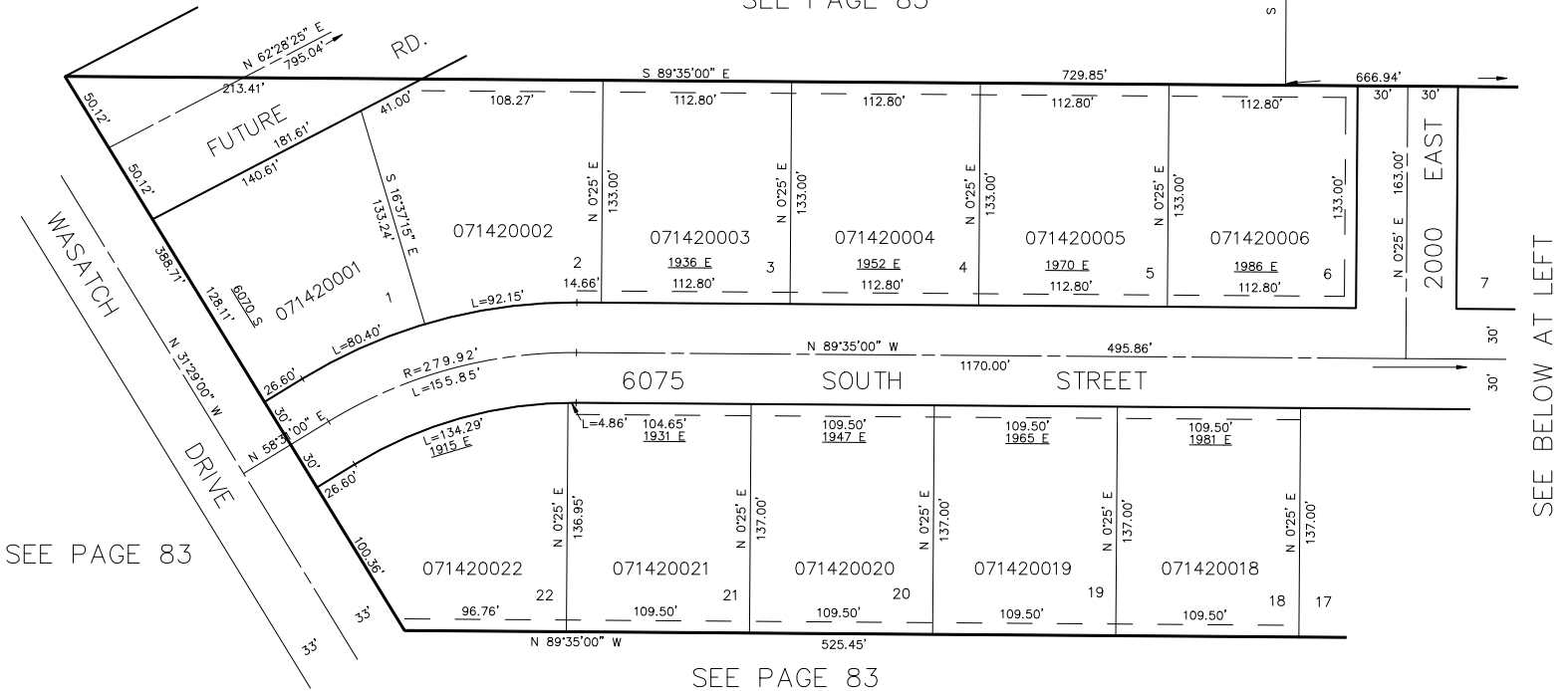
IN WEBER COUNTY

SCALE 1" = 60'

TAXING UNIT: 159

N.E. COR. S.E. 1/4  
SEC. 22

SEE PAGE 83



SEE PAGE 83

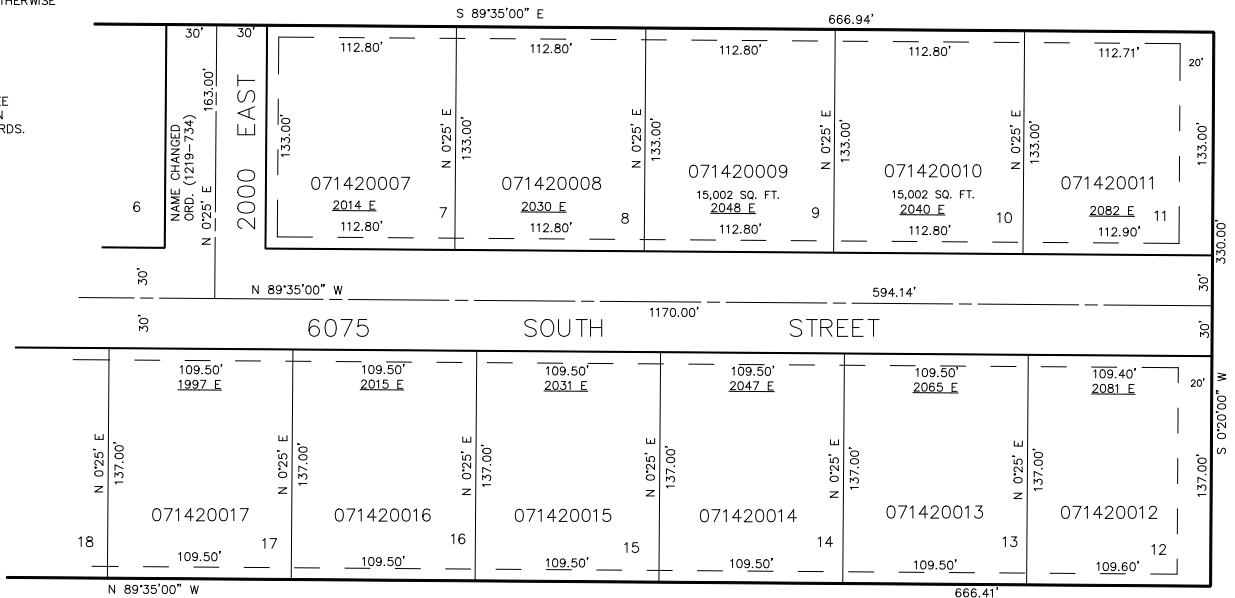
7' UTILITY & DRAINAGE EASEMENTS EACH  
SIDE OF PROPERTY LINES AS INDICATED  
BY DASHED LINES EXCEPT AS OTHERWISE  
SHOWN.

SEE PAGE 83

SEE PAGE 97

FOR COMPLETE ENG DATA SEE  
ORIGINAL DEDICATION PLAT IN  
BOOK 16, PAGE 99 OF RECORDS.

SEE ABOVE AT RIGHT



SEE  
PAGE  
97

SEE PAGE 97